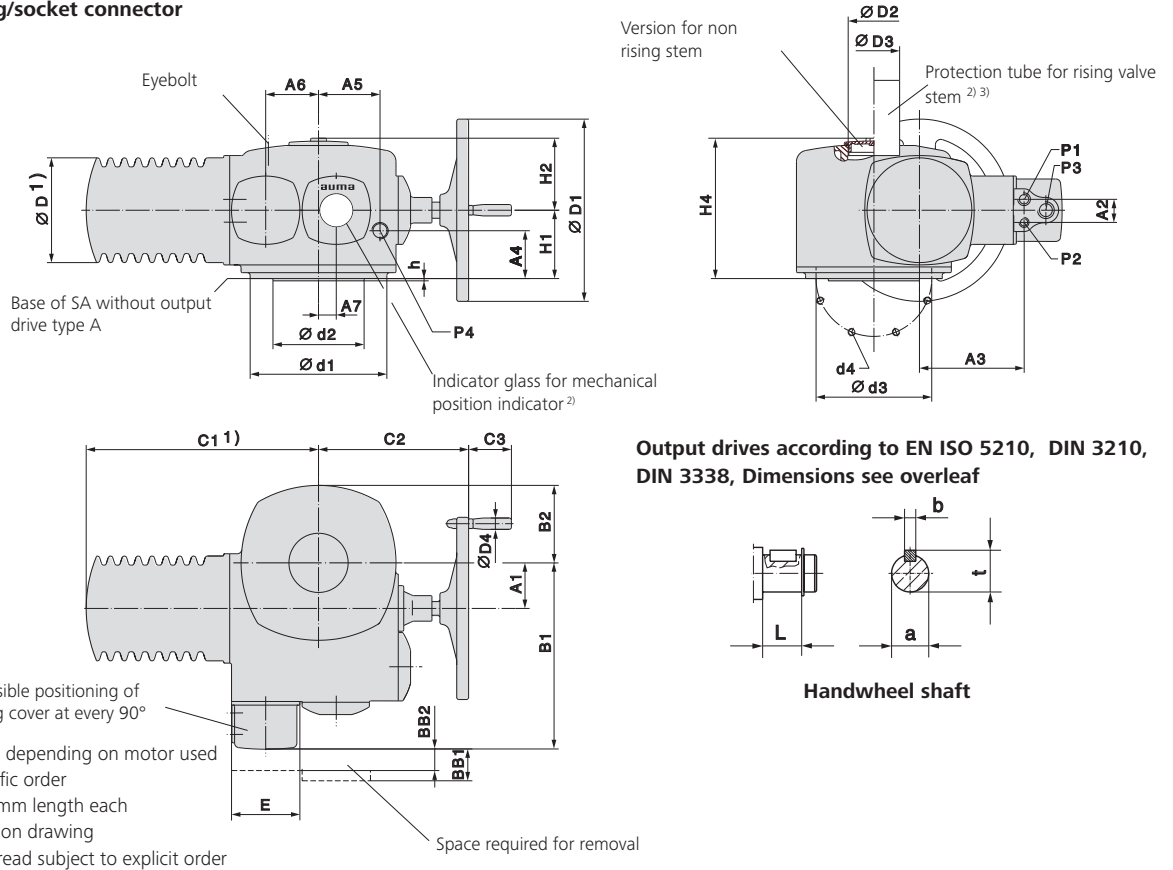


**Dimensions Multi-turn actuators with 3-phase AC motors**

with AUMA plug/socket connector



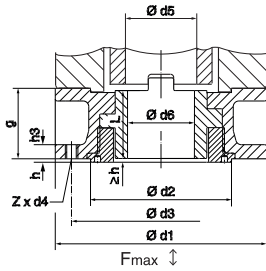
Dimensions		SA 25.1/SAR 25.1		SA 30.1/SAR 30.1		SA 35.1		SA 40.1		SA 48.1	
EN ISO 5210	DIN 3210	F25	G4	F30	G5	F35	G6	F40	G7	F48	
A1		100		125		160		200		250	
A2		51		51		51		51		51	
A3		231		240		290		290		285	
A4		105		182		223		243		-	
A5		135		150		170		190		-	
A6		116		116		116		116		116	
A7		39		39		39		39		39	
B1		411		445		530		570		615	
B2		170		185		225		250		290	
C1 max. 1)		513		742		816		841		970	
C2		316		345		458		487		523	
C3		93		93		93		93		93	
Ø D max. 1)		230		265		265		265		305	
Ø D1		400		500		400		500		630	
Ø D2		G 4"		G 5"		M190 x 3		M220 x 3		M220 x 3	
Ø D3		114.3 x 4.5		139.87 x 4.85		193.7 x 6.3		219.1 x 6.3		219.1 x 6.3	
D4		25		25		25		25		25	
E		150		180		160		160		165	
H1		150		175		203		208		215	
H2		162		175		214		214		231	
H4		312		350		417		422		454	
L		39		46		39		46		46	
P1 5)		M25 x 1.5	Pg 21	M25 x 1.5	Pg 21	M25 x 1.5	Pg 21	M25 x 1.5	Pg 21	M25 x 1.5	Pg 21
P2 5)		M20 x 1.5	Pg 13,5	M20 x 1.5	Pg 13,5	M20 x 1.5	Pg 13,5	M20 x 1.5	Pg 13,5	M20 x 1.5	Pg 13,5
P3 5)		M32 x 1.5	Pg 29	M32 x 1.5	Pg 29	M32 x 1.5	Pg 29	M32 x 1.5	Pg 29	M32 x 1.5	Pg 29
P4 5)		M32 x 1.5	Pg 29	M40 x 1.5	Pg 36	M50 x 1.5	Pg 42	M50 x 1.5	Pg 42	4)	
BB1 min.		70		70		70		70		70	
BB2 min.		30		30		30		30		30	
Ø a f7		30		30		40		40		40	
b		8		8		12		12		12	
Ø d1		300		350		415		475		560	
Ø d2 f8		200	160	230	180	260	220	300	-	370	
Ø d3		254		298	300	356		406		483	
d4		8 x M16		8 x M20		8 x M30		8 x M36		12 x M36	
h		5		5		5		5	-	8	
t		33		33		43		43		43	

We reserve the right to alter data according to improvements made. Previous documents become invalid with the issue of this document.

Dimensions Output drives according to EN ISO 5210, DIN 3338, DIN 3210

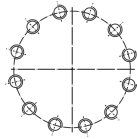
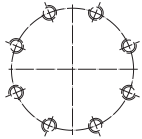
Stem nut

Type  
EN ISO 5210 **A**  
DIN 3210 **A**



SA 25.1 – SA 40.1

SA 48.1

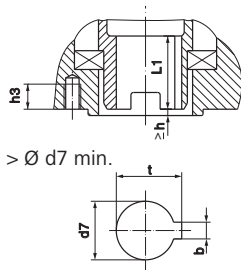


Arrangement of bores for screws d4

Dimensions		SA 25.1		SA 30.1		SA 35.1		SA 40.1		SA 48.1
EN ISO 5210	DIN 3210	F25	G4	F30	G5	F35	G6	F40	G7	F48
F max. kN		380		460		875		1,375		2,000
Ø d1		300		350		415		475		560
Ø d2 f8		200	160	230	180	260	220	300	–	370
Ø d3		254		298		300		356		406
d4		M16		M20		M30		M36		M36
Ø d5		100		120		160		180		200
Ø d6 max.		95		115		155		175		175
g		130		160		185		225		270
h		5		5		5		8	–	8
h3		20		25		38		45		45
L		126		156		180		219		214
Z		8		8		8		8		12
Weight kg		42		69		125		200		280

Output drive plug sleeve <sup>3)</sup>

Type  
EN ISO 5210 **B 1 = Ø d7**  
EN ISO 5210 **B 2 < Ø d7 > Ø d7 min.**  
DIN 3210 **B = Ø d7**

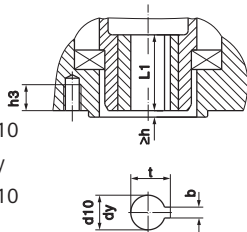


Dimensions		SA 25.1		SA 30.1		SA 35.1		SA 40.1		SA 48.1
EN ISO 5210	DIN 3210	F25	G4	F30	G5	F35	G6	F40	G7	F48
b JS9 <sup>1)</sup>		28		32		40		45		<sup>5)</sup>
Ø d7 H9		100		120		160		180		<sup>4)</sup>
Ø d7 min.		75		90		120		140		<sup>5)</sup>
h3		25		32		48		58		60
L1		110		130		180		200		80
t <sup>1)</sup>		106.4		127.4		169.4		190.4		<sup>5)</sup>

For missing dimensions, refer to type A

Bore with keyway

Type  
EN ISO 5210 **B 3 = Ø d10**  
EN ISO 5210 **B 4 ≤ Ø dy**  
DIN 3210 **E = Ø d10**

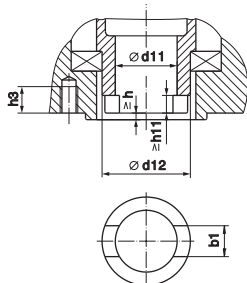


Dimensions		SA 25.1		SA 30.1		SA 35.1		SA 40.1		SA 48.1
EN ISO 5210	DIN 3210	F25	G4	F30	G5	F35	G6	F40	G7	F48
b JS9 <sup>1)</sup>		14		18		22		28		28
Ø d10 H9		50		60		80		100		100
Ø dy max.		75		90		120		140		160
h3		25		32		48		58		60
L1		110		130		180		200		180
t <sup>1)</sup>		53.8		64.4		85.4		106.4		106.4
Weight kg		5.1		8.6		21.2		27.5		35.5

For missing dimensions, refer to type A

Dog coupling <sup>3)</sup>

Type  
DIN 3338 **C = Ø d11**



Dimensions		SA 25.1		SA 30.1		SA 35.1		SA 40.1		SA 48.1
EN ISO 5210	DIN 3210	F25	G4	F30	G5	F35	G6	F40	G7	F48
b1 H11		30		40		45		50		85 <sup>6)</sup>
Ø d11 H11		64		75		105		125		140
Ø d11 min.		50		60		80		100		–
Ø d11 max. <sup>2)</sup>		100		120		160		180		–
d12		130		160		200		240		280
h3		25		32		48		58		60
h11		11		13		17		20		47

For missing dimensions, refer to type A

- 1) Dimensions depend on Ø d7/ Ø d10, refer to DIN 6885-1
- 2) For rising valve stem Ø d11 max. = Ø d5 of type A
- 3) Weight included in actuator
- 4) Involute splines N210x5x40x9H DIN 5480
- 5) Bore with keyway: dy = 180 mm; b = 32 mm; t = 187.4 mm
- 6) Toleranz E9

We reserve the right to alter data according to improvements made. Previous documents become invalid with the issue of this document.